



House Guide

Check-in, safety, house rules and resources

Check-in:

Your keys and gate remote will be waiting for you in the lockbox by the front door. Before you check in, we'll send you the lockbox combination (also video instructions on how to use the lockbox).

Check-in/out times:

We always do our best to accommodate an early check-in and late check-out. If we're juggling two groups on one day, then worst-case scenario, check-out is 11am and check-in 3pm. If you leave your suitcases at the house, and then get lunch or explore while the maids are working, that's OK, just let us know.

Swimming Pool:

Although we've installed some mats by the swimming pool, the tiles around the pool are very slippery when wet, so please be very careful (especially with kids running or with elderly people). Be VERY careful with small dogs—the pool is a potential drowning hazard. Lastly, the pool is fairly deep, so people under 5'8" or 174cm should be very careful, and swim with one of our inflatable devices and with other people.

Kitchen Supplies (some free, alcohol extra):

Help yourself to any coffee, tea, eggs, milk, bread, and bananas you find in the kitchen (coffee and tea should last during your stay, while the eggs, milk, bread, and bananas will likely last only the first day). For your convenience, we provide some alcohol for sale: local beers, thb50, heineken, thb70, and all wines, thb 1200 (payment can be made by bank transfer, or AirBnB app); if you'd prefer NOT to have any alcohol in the house, just let us know.





House Guide

Check-in, safety, house rules and resources

Electric Carts:

We have several electric vehicles for you to use to explore the town.

Before you take the electric carts out on the road, please look BOTH ways and make sure no cars are coming from either direction; it is a steep slope, so you'll probably wind up in the middle of the road. I recommend using a "spotter"—have someone walk down the ramp and across the street, making sure no cars are coming from either direction.

When you come back to the house, you should go up the slope directly (not at an angle).

Because the small cart isn't very powerful, everyone except for the driver might need to get off, making it light enough to climb the slope. But most importantly: make sure NO vehicles are coming from EITHER side before you take a cart onto the road!

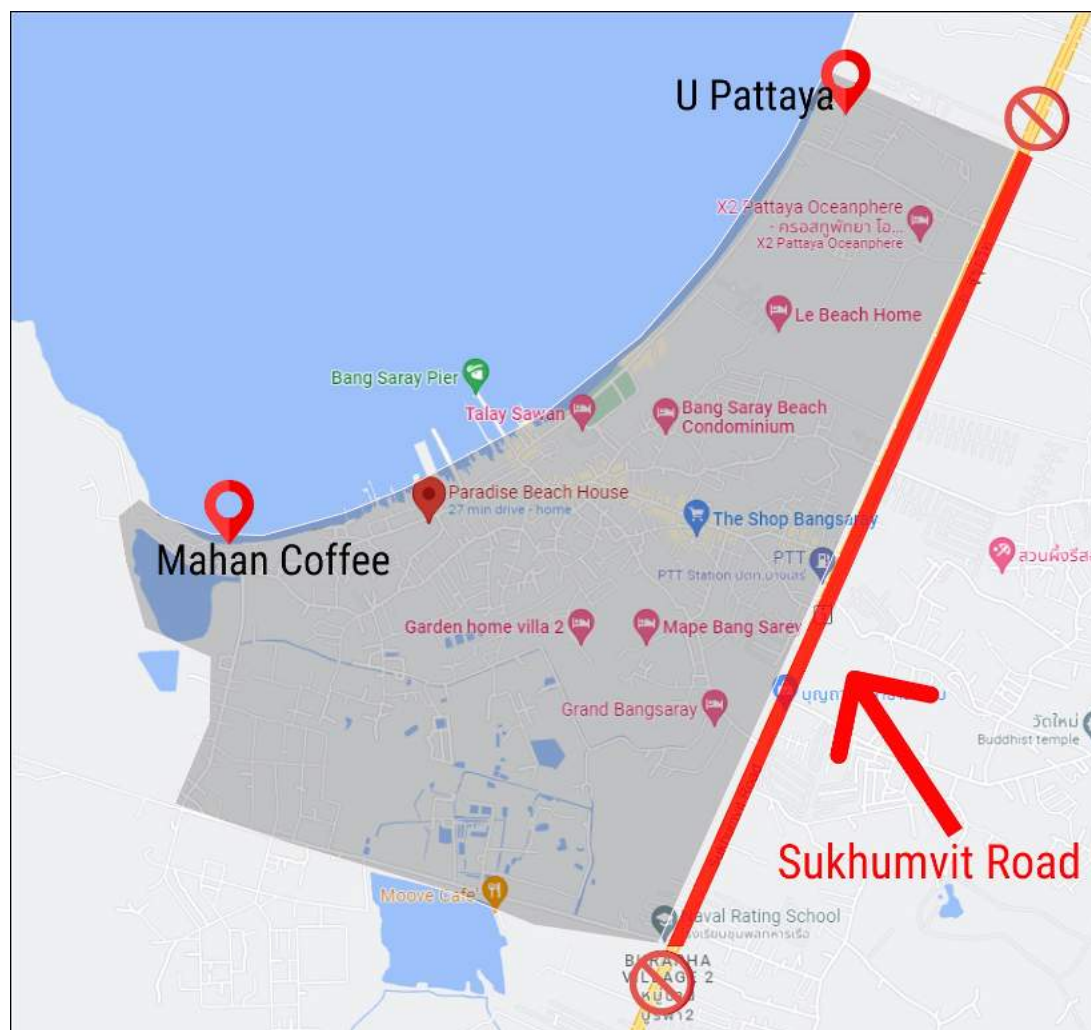


Electric Carts, Operation and Range: We will send you separately instructional videos, and written instructions, on electric cart operation; please read and watch carefully. Fully charged, the small cart has a range of 10km, and the large cart a range of 20km. That being said, the carts are not permitted outside of Bang Saray. So stay away from Sukhumvit Road, and enjoy Bang Saray, from the southern point of Mahan Coffee, to the northern point of U Pattaya.



House Guide

Check-in, safety, house rules and resources



Front gate, animals: There are plenty of stray/soi dogs around, and even some monkeys, so please keep the front gate closed, and don't leave food outside.

Smoking: Smoking is NOT allowed inside. Please use the ashtrays provided outside. Cigarette butts discarded on the ground will result in a thb 1500 fine (our #1 pet peeve).

Pool Technician and Gardener: The pool guy comes to clean the pool Tuesday, Thursday, and Saturday mornings (around 9 or 10am), and the gardener is there Wednesday (roughly from 8am-4pm), so please be advised that an "unfamiliar" man will be on the property during this time.



House Guide

Check-in, safety, house rules and resources

Transportation: We have plenty of parking, and you're welcome to use our electric vehicles while here. The electric vehicles are fun to explore the town, but they might not be large enough for a big group with lots of supplies; if you're going to the beach with a lot of people, chairs, umbrellas, and a cooler, a car might be more suitable (plenty of parking). Also, you can also easily hail a car/taxi through Bolt or Grab.

Car rental: We have a 2011 Izuzu MU-7 (3 rows of seats, fits 7 adults), which responsible guests (must have a local or international drivers license) may rent for thb 1500/day.



Car service from Bangkok: If you need a car service from Bangkok, we can recommend a great and reliable service: Instyle Private Car Service, thb 1400 for a sedan, thb 1700 for a SUV (includes all tolls, fuel, etc.). We can help arrange, or they can be reached directly at +66 84 6395192 and narin.sachanakul@hotmail.com. If you would like a second price quote, we can also recommend Mr. Yai's Taxi Service, at +66 92 836 3185.

Special Needs and Requests: If you have any special needs or requests, for example an inflatable bed, children's cot or high-chair, decorations for any particular celebration, please let us know, and we'll do our best to accommodate you.



House Guide

Check-in, safety, house rules and resources

Maid Service: The cleaning fee covers the initial cleaning only, and not any subsequent cleanings (we're happy to facilitate additional maid services during your stay).

Checking out is easy: just turn off the air-con and lights, close the gate behind you, and leave the gate remote in the lockbox on the way out, thanks! We don't charge for electric, but we will deduct from the deposit if the air-conditioning isn't turned off (our #2 pet peeve, after cigarette butts on the ground).

Wifi: The Wifi is Paradise Beach House, and the password is 87654321.

Garbage: Garbage is picked up twice a day, 9am and 5pm. Please leave any garbage immediately outside the front gate, on the right (by the pole). Note: the garbage must be in a bag, tied up (do not put trash **bins** outside, just trash in the bags).

Feedback: If anything was/is less than perfect at the villa (i.e. the maid missed a spot), or you have any suggestions for improvement (adding some kitchen equipment, more towels somewhere, etc.), please let us know!

We rely on guest feedback to improve the place, so any feedback is much appreciated, thanks.





Electric Vehicles

Safety and Instructional Videos

If you would like to use the electric vehicles, you **MUST** watch the safety and instructional videos below.

Note: You can *scan each QR code* with your phone to pull up the related video.





Electric Vehicles

Safety and Instructional Videos

Safety: Make 100% sure there's NO traffic from either direction when you enter the street.

<https://youtu.be/avxPKewAfwQ>



Small electric vehicle operation

<https://youtu.be/Cr2oSpKJEBM>





Electric Vehicles

Safety and Instructional Videos

Electric vehicle troubleshooting

https://youtu.be/JD_FQG1ZtrA



Full-sized golf cart: instructions for using the big golf cart.

https://youtu.be/KWaV_ZSQoQI



Electric Vehicles

Safety and Instructional Videos



Full-sized golf cart operating instructions:

1. Open the 2nd seat and check the battery. If under 50%, charge it up. Note: never leave it charging overnight. 4hrs is the max charging limit (more than that damages the battery).
2. Under the front seat, flip the switch to RUN (to the right)
3. Have a seat, and turn the key (middle of the dashboard) to ON.
4. On the front of the seat (under your right knee/thigh), you can flip the switch between: R (backward) and F (forward).
5. Lights (optional): Pull out the switch (just over of the steering wheel) to turn on lights.
6. Anytime you stop, please turn off the front key. If you press the top-left part of the brake, it will lock in place (important if you're on an incline).
7. If you're putting the cart "to bed," please also open the front seat and switch it off (i.e. flip the left, from RUN to OFF).
8. Caution: this cart is MUCH more powerful than the small one, so please take care with acceleration. Also, make sure there are no cars coming from either direction when you leave the property.



Explanatory Videos

Using house facilities and equipment

Please **scan QR code** with your phone/ipad to pull up the related video.

Check-in Instructions (keys/remote in lockbox)

<https://youtu.be/w6IBwdWYTFg>



Please **scan QR code** with your phone/ipad to pull up the related video.

Kitchen Supplies (some free, alcohol extra)

<https://www.youtube.com/shorts/iyiMdD7W19A>





Explanatory Videos

Using house facilities and equipment

Help yourself to any coffee, tea, eggs, milk, bread, and bananas you find in the kitchen (coffee and tea should last you during your stay, while the eggs, milk, bread, and bananas will likely last only the first day). We also provide some alcohol for sale: local beers, thb50, Heineken, thb70, and all wines, thb1200 (payment can be made by bank transfer, or through the AirBnB app); if you'd prefer NOT to have any alcohol in the house, no problem just let us know.

The remaining videos are NOT "required viewing," but they should be a handy guide if you have any issues or difficulty.

Barbecue

<https://youtu.be/T2ddcL6udT8>



Note: for safety, when you light the flame on the barbecue, please use the long, barbecue lighters provided (in the kitchen, top drawer)



Explanatory Videos

Using house facilities and equipment

Ice-maker

<https://youtu.be/NhITkK7r-14>



Pool Lights

https://youtu.be/oSZg7uY-p_c





Explanatory Videos

Using house facilities and equipment

Laundry Machine

<https://youtu.be/NaeXmo8oHAE>



T.V.

<https://youtu.be/eKcwLQaUXNA>





PARADISE BEACH HOUSE
BANG SARAY

O r i e n t a t i o n

Orientation

Neighborhood, restaurants, activities



Paradise
Beach
House



Orientation

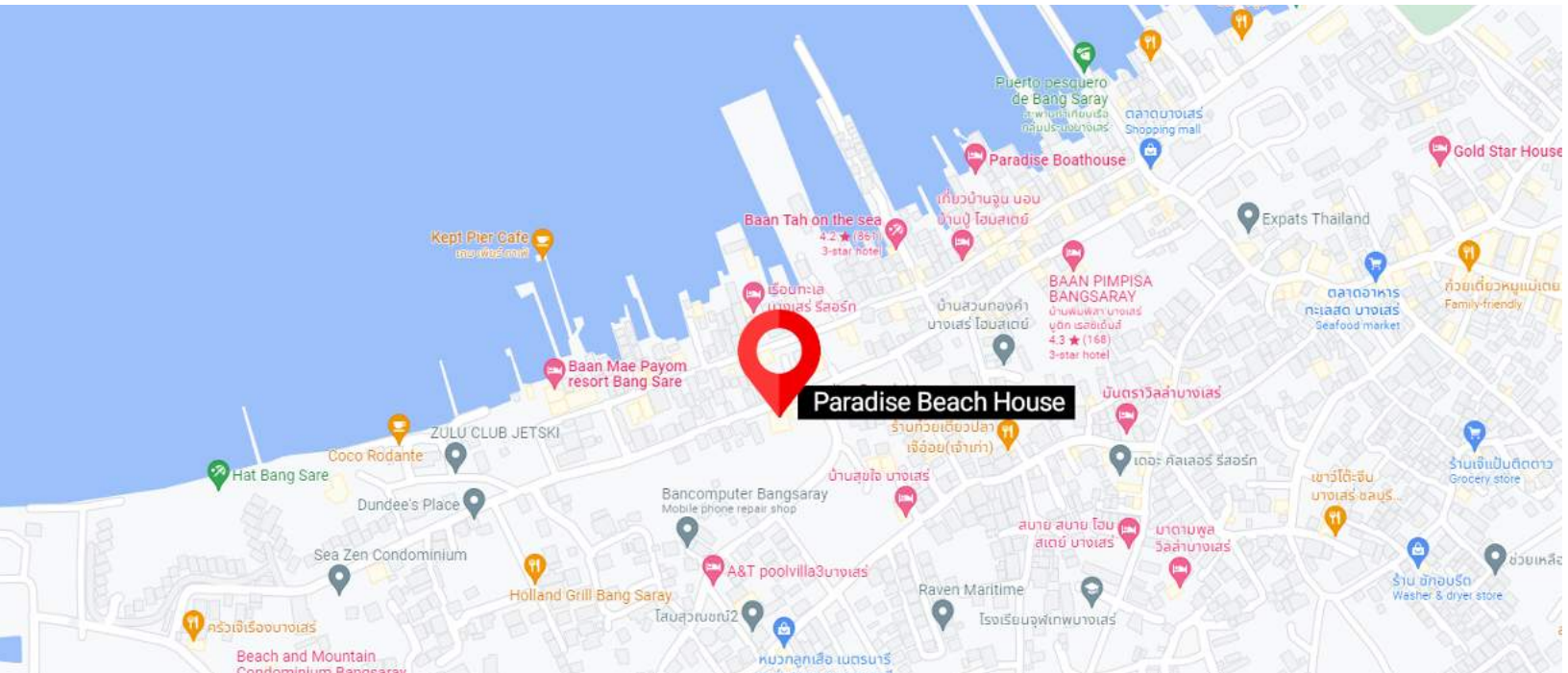
Neighborhood, restaurants, activities



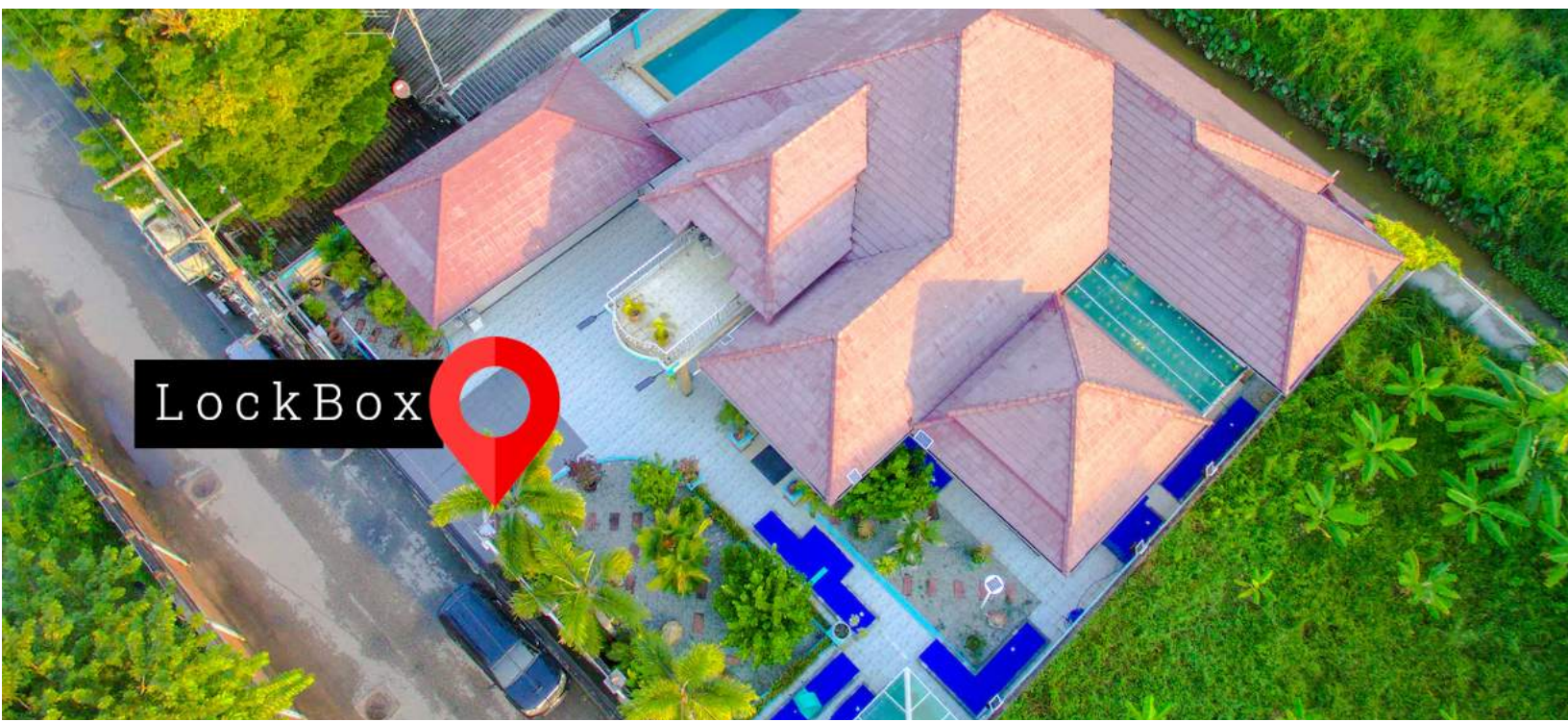
Our address is 77/4 Moo 4, Bang Saray, Sattahip District, Chon Buri, 20250.

That works for deliveries, but does NOT show up on Google Maps.

You can find us on Google Maps under **"Paradise Beach House,"** and this hyperlink should take you there: <https://goo.gl/maps/8az3AWcbXDb5tLp6>



For check-in, we will leave the gate remote and front door key in the lockbox (on the front door), and provide the combination.



Orientation

Neighborhood, restaurants, activities



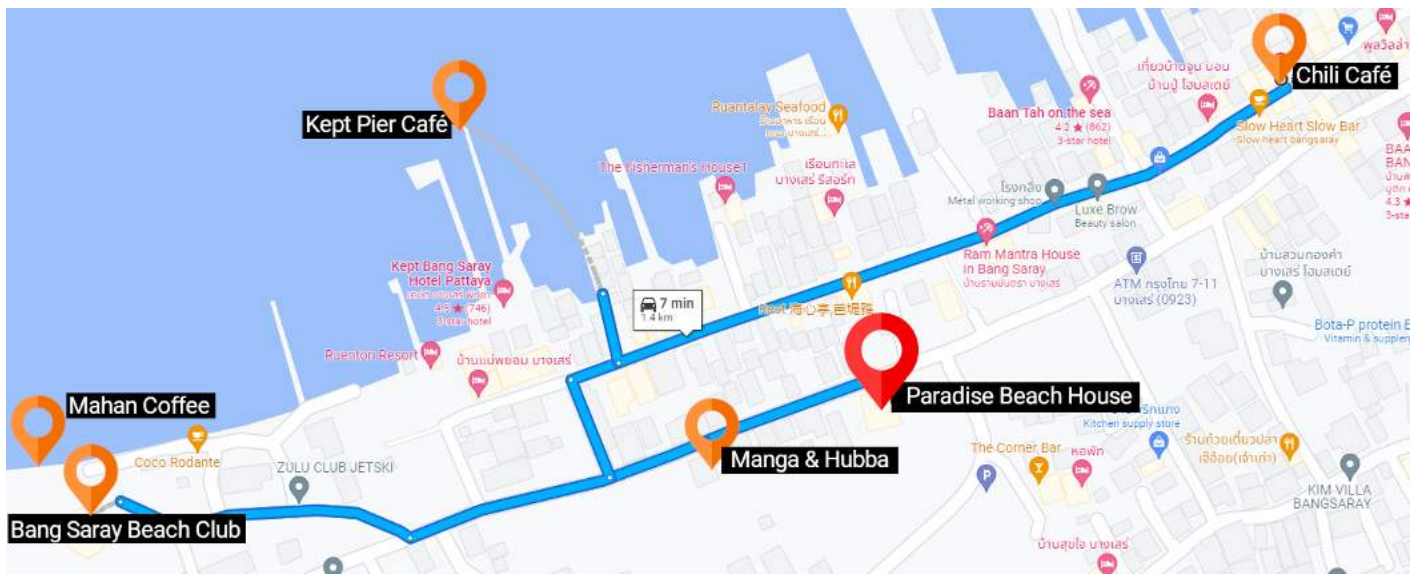
Here is some orientation info, in particular local restaurants and beaches:

There are a lot of restaurants close by.

We love **Manga & Hubba** (180 m from the house) and **Bang Saray Beach Club** (500 m south) . . both on the water, but Bang Saray Beach Club has a better beach and more expansive views (also customers are welcome to use the pool).

Kept Pier Café is more upscale, with the bar stretching down a long pier (300 m away, just south of Manga & Hubba—book a table in advance for dinner).

Chili Café is also popular (350 meters north), and **FM Bike Café** (90 meters north) is great for a morning coffee.



Mahan Coffee is on a quiet beach about 1 km south, and that area is great for a morning run or bike ride.

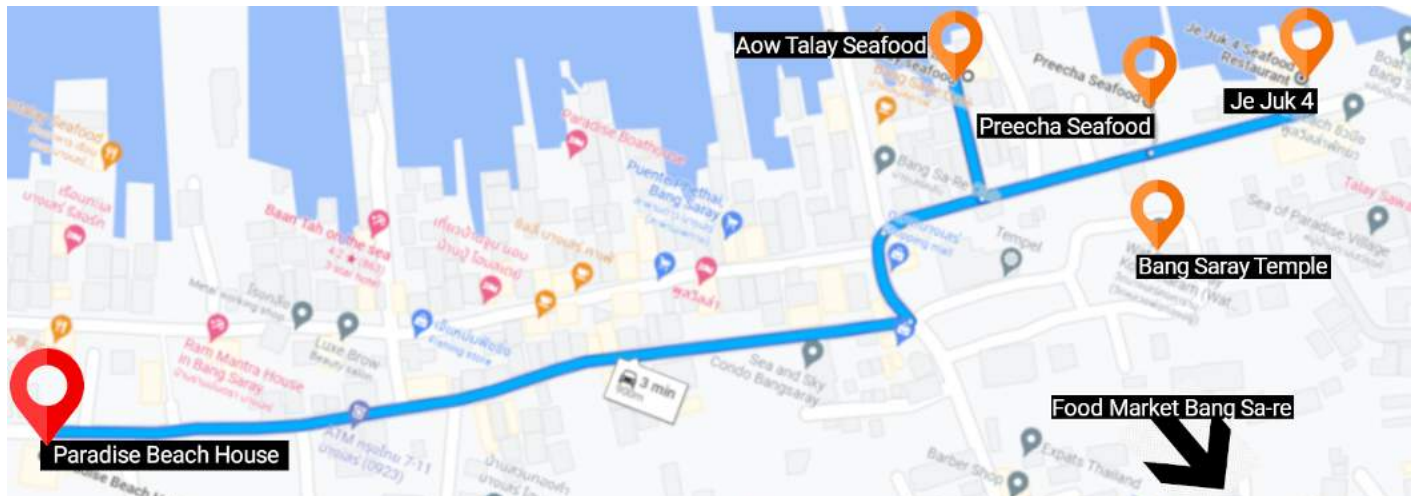


Orientation

Neighborhood, restaurants, activities



Our immediate area is very “Thai,” with lots of local shops and markets. The **Bang Saray Temple** is worth checking out, especially during their night markets on Wednesdays (only 550 meters north). The coast immediately north of us is mostly piers, including some great seafood restaurants (**Preecha Seafood, Je Juk 4, Aow Talay Seafood**). Going inland, the Food Market **Bang Sa-re** aka the Bang Saray Night Market (open 3–8pm) is 1.6km up the main road (Moo 2), and near a cluster of shops, bars, and restaurants (La Taverna, Sports Bar Café, Malee Café, The Bang Saray Tavern, A&M BBQ).

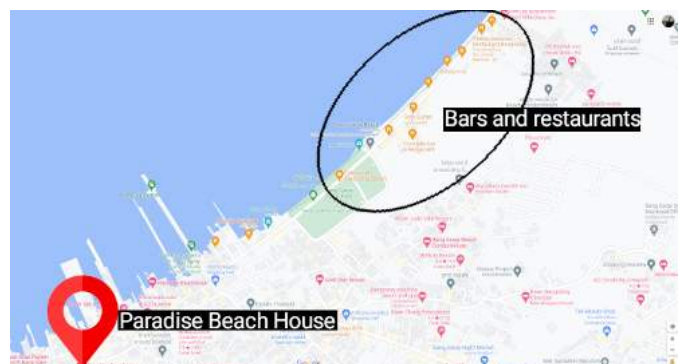


The nice sandy beach starts (roughly) where “**Bang Saray Beach**” is found on Google Maps. Immediately north of this pin (just north of the blue whale statue) is a fun spot; you can order food and drinks and watch the sun set,



Note: here, you’re not actually on the proper beach; there’s a concrete wall just behind us, and the beach is about 1 meter down.

Right here, ACROSS the road from the beach, and then stretching north, there are plenty of small bars and restaurants (some with live music and pool tables)—the perfect place to migrate after sunset.



Orientation

Neighborhood, restaurants, activities



Looking north, the wall disappears, and it's a 1km+ stretch of nice sandy beach.



Looking south, there's a short stretch of white sandy beach before you hit the piers and restaurants.

Please note: no restaurants are allowed on this stretch of beach, and businesses are not allowed to provide chairs or umbrellas; so, if you want to camp out here, you'll want to bring your own supplies (we should have plenty of towels, umbrellas, chairs, and a big cooler; also, you can also usually find a tree to camp out under).

There are plenty of nice restaurants across the road (i.e. not on the beach, but with great views of the ocean), including the Saloon Bar and the Aitalay-Seaview Restaurant (with a children's play area, and live music some nights).



Orientation

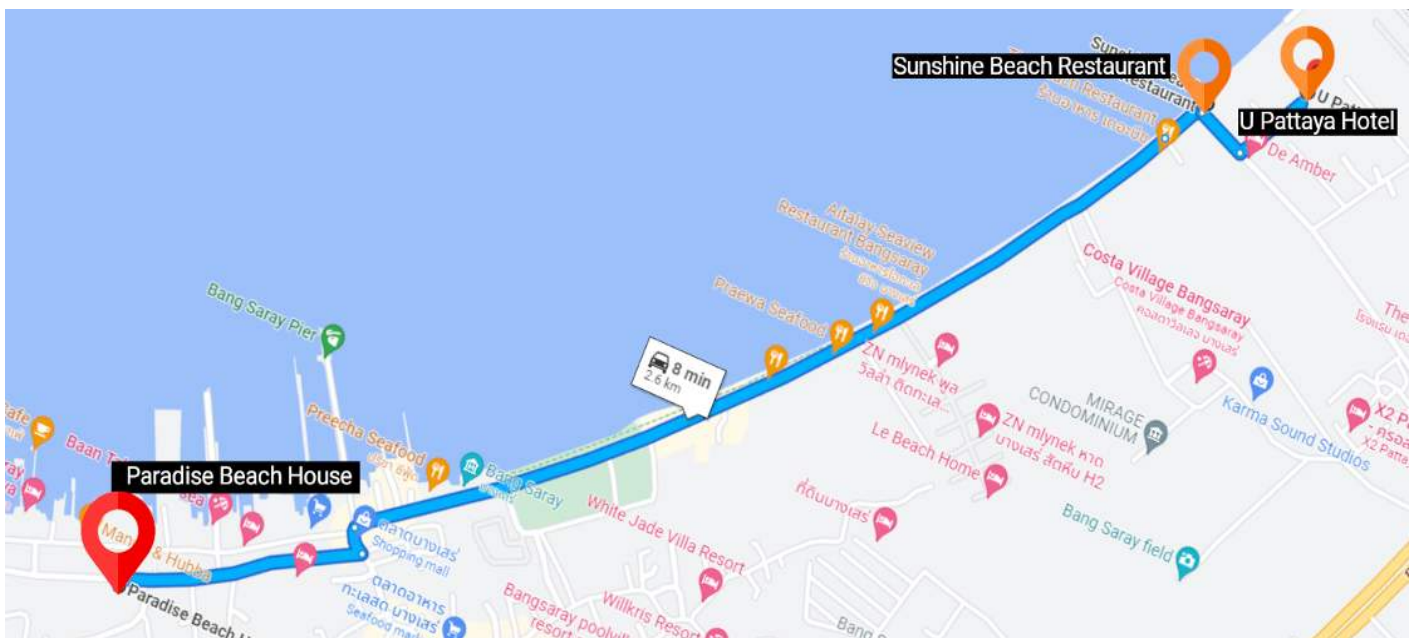
Neighborhood, restaurants, activities



For a fun spot and restaurant actually on the beach itself, check out the **Sunshine Beach Restaurant** (on the northernmost tip of Bang Saray Beach, where the beach road turns inland—you reach the restaurant by walking OVER the railing).



If you continue to walk north past the **Sunshine Beach Restaurant**, you'll come across **U Pattaya Hotel**, which has a great little bar, restaurant, and infinity pool, facing the ocean (non-hotel guests welcome). The map shows the road access, but it's also accessible by the beach.

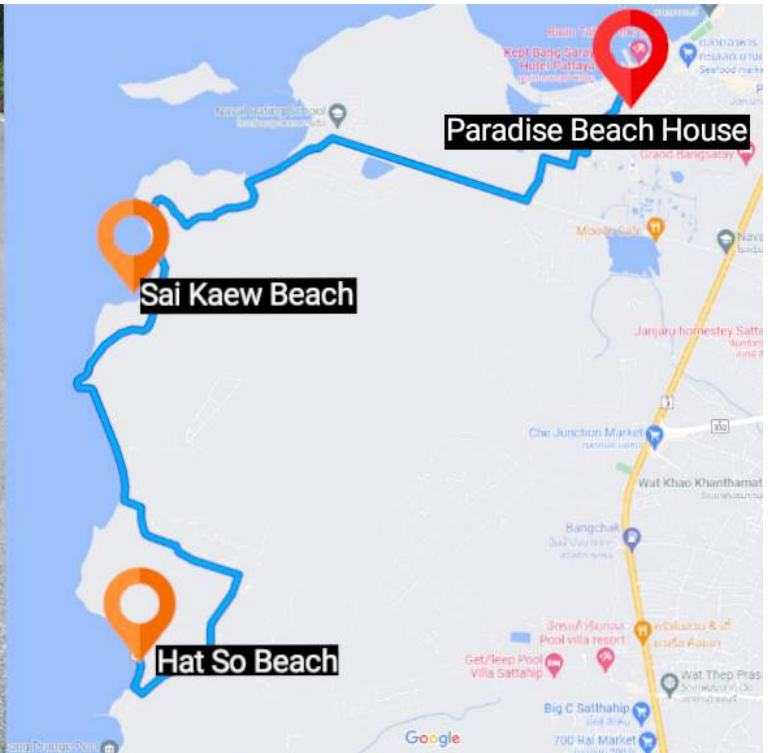


Orientation

Neighborhood, restaurants, activities



Just south of us, there's a lush, mountainous area, completely undeveloped, with amazing views, beaches, and lots of monkeys. The area is owned by the military, and at the checkpoint (just a few hundred meters south of us), they sometimes deny entry if the driver of the car isn't a Thai citizen (if so, a few hundred-baht tip might help). Once inside, the drive is absolutely gorgeous. **Sai Kaew Beach** is 7.7 km away (with a great white sand beach and cute restaurant), and **Hat So Beach** is another 6 km south.

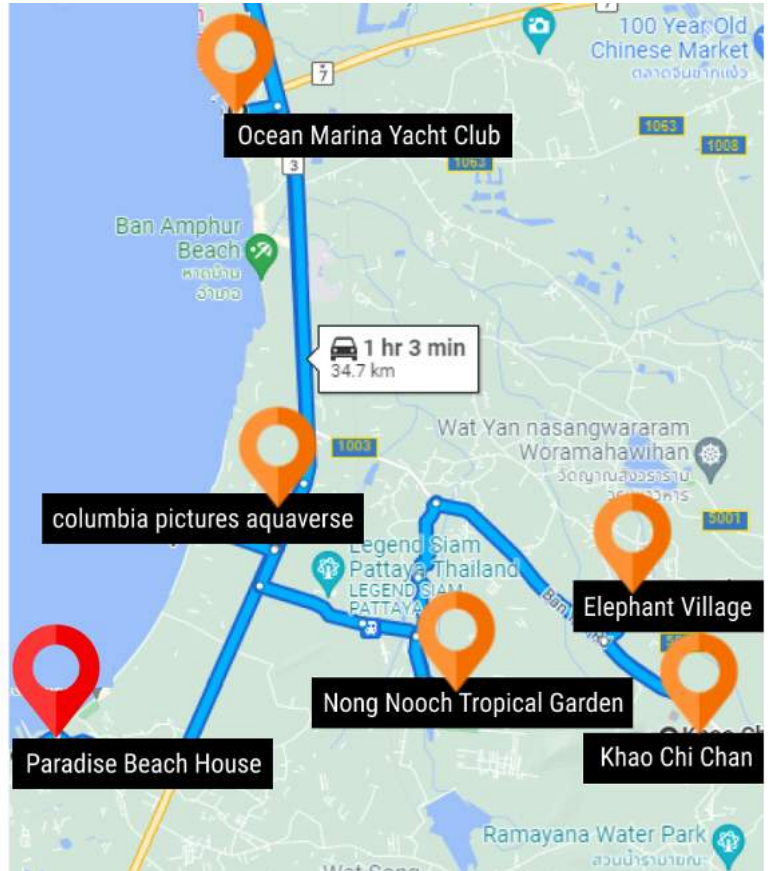


Orientation

Neighborhood, restaurants, activities



Outside of town (i.e. NOT accessible by electric vehicles):
The Nong Nooch Tropical Garden (and Dinosaur Valley Theme Park) are 6.3km inland, and the columbia pictures aquaverse.
Nearby are: the Swiss Sheep Farm Pattaya (a petting zoo), Upside Down House Pattaya, the Khao Chi Chan (Buddha carving in a rock wall), Wat Yan, Viharn Sien (Buddhist temple turned museum), and the Camp Chang Adventure Park and Elephant Village, and the Legend Siam Pattaya (a theme park).
Read the reviews and confirm that they're open!



The Nong Nooch Tropical Garden



khao chi chan



columbia pictures aquaverse



Elephant Village

Orientation

Neighborhood, restaurants, activities



If you wish to charter a yacht or go on a boat trip (snorkeling and visit to **Ko Lan, Ko Kham**, or some pristine lesser-known island), the **Ocean Marina Yacht Club** is 16km north, and we can help arrange a trip.

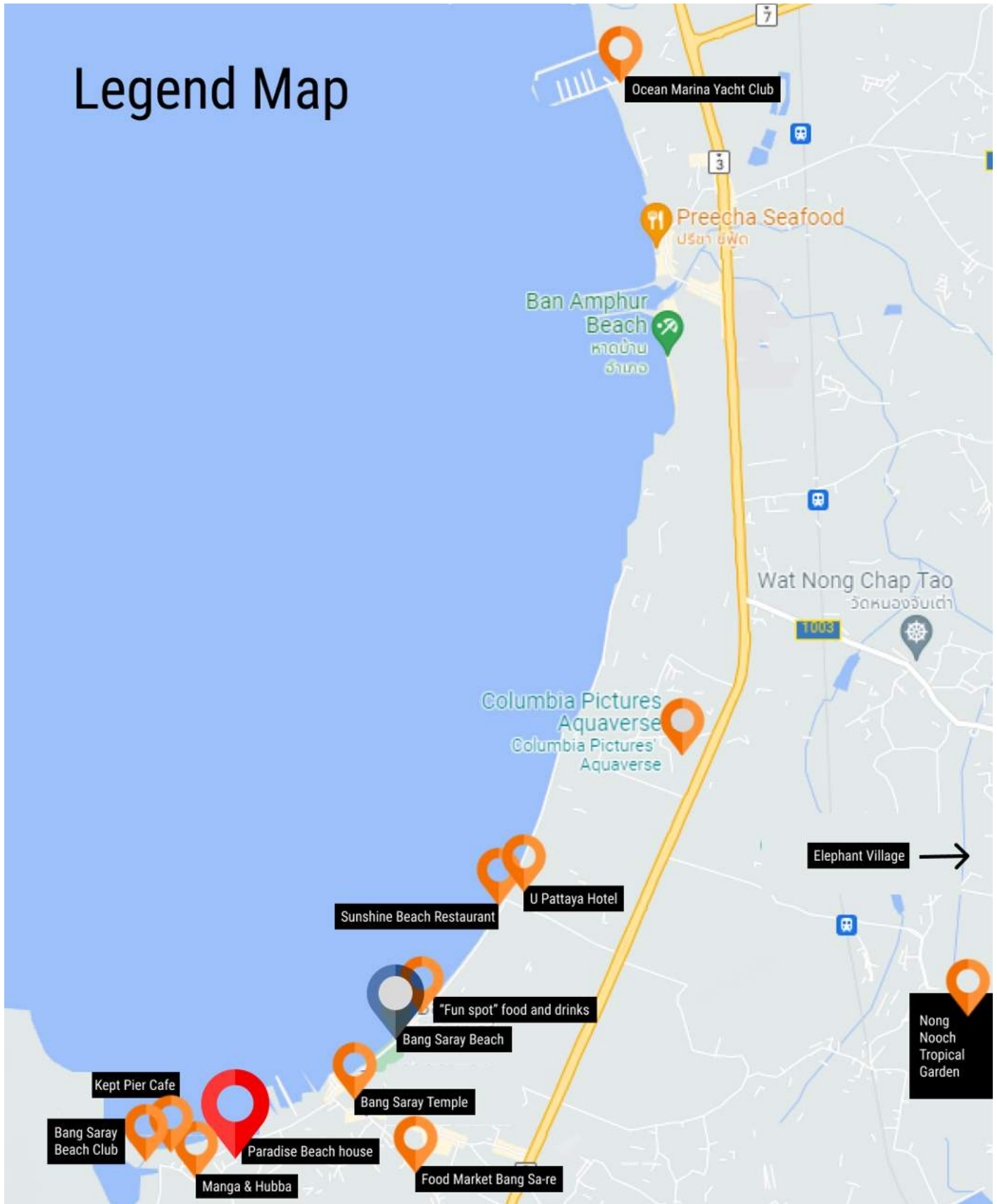


Orientation

Neighborhood, restaurants, activities



Legend Map



Orientation

Neighborhood, restaurants, activities



Closer to your check-in date, we'll send specific check-in instructions, and also some explanatory videos (how to operate the lockbox, BBQ, ice-maker, TV, electric carts, etc.).

Please don't hesitate to contact us with any questions, and we hope you have a fantastic stay!

