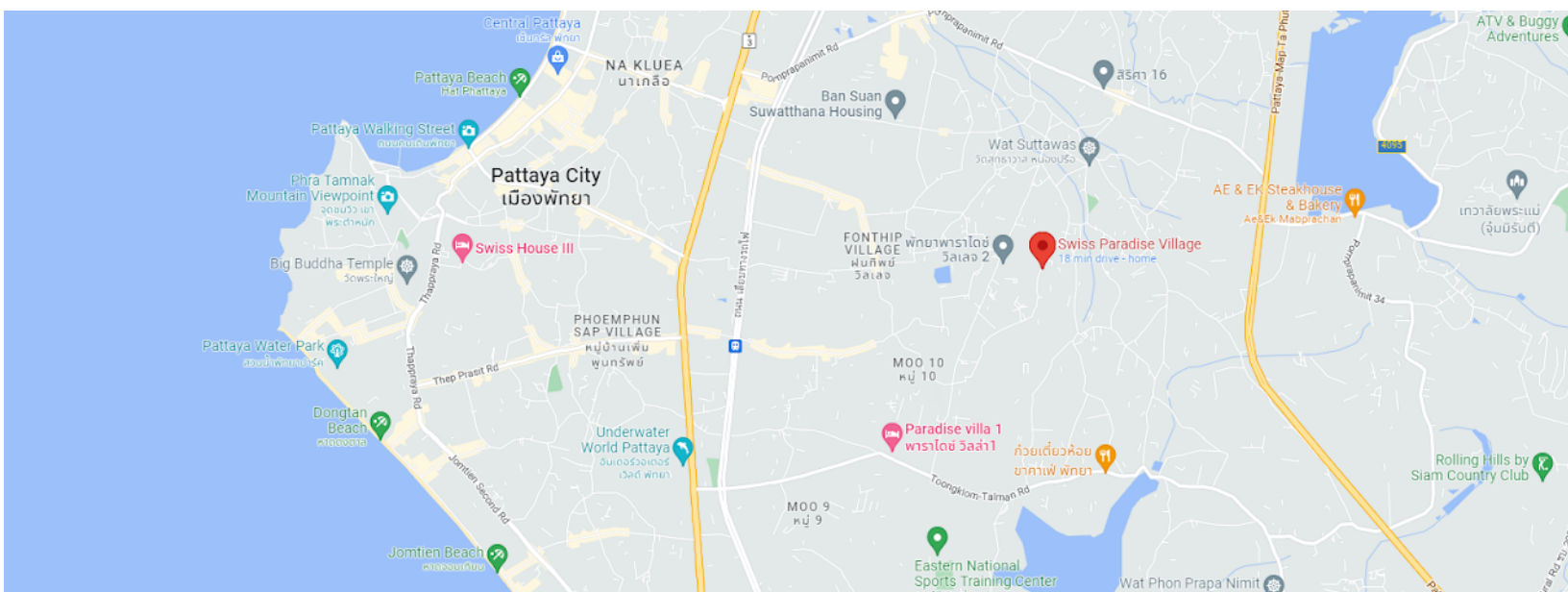




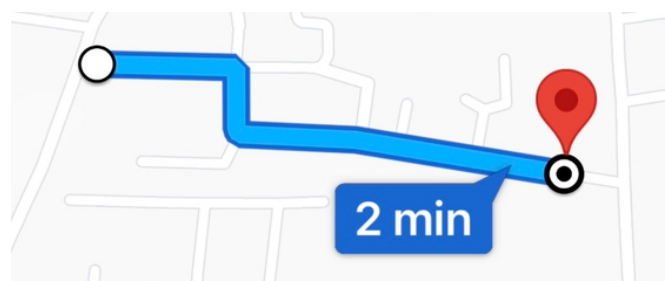
# House Guide

Check-in, safety, house rules and resources

Directions: Our address is: House 30/38, Moo 13, Swiss Paradise Village, Soi Nernplabwan, Nong Prue, Banglamung, Chonburi 20150. You can find us under “Swiss Paradise Village” on Google Maps. [LINK](#)



To get to House 30/38, take the first right after security (usually security just waves you in; otherwise, just tell them House 30/38); then it's a left, and we're the last house down on the left hand side (just before the back gate).



**Wi-Fi:** please use ParadiseGardens, passcode 87654321; or VonBurgh, passcode sixgrandkids.

**Check-in/out times:** We always do our best to accommodate an early check-in and late check-out. If we're juggling two groups on one day, then worst-case scenario, check-out is 11am and check-in 3pm. If you wanted to drop off your suitcases, and then get lunch or explore while the maids are working, that's OK, just let us know.



# House Guide

Check-in, safety, house rules and resources

**Keys and Remotes:** When you arrive, the front door will be unlocked, and on the small table immediately inside, we will leave you: the remote control for the back gate, the remote control for the private covered garage, and all the keys (locking the doors is optional; we never do—we're in a safe gated community). **Special Needs and Requests:** If you have any special needs or requests, for example an inflatable bed, children's cot or high-chair, some specific cooking utensil, please let us know, and we'll do our best to accommodate you.

## **Delivery of Food, Groceries, Other Supplies:**

Tops is the biggest local grocery store chain, with on-line ordering and delivery here: <https://www.tops.co.th/en/>. <https://paleorobbie.com> is my favorite source for organic groceries, including coffee. For your reference, our mailing address is House 30/38 Moo 13, Swiss Paradise Village, Soi Nernplabwan, Nong Prue, Bang Lamung, Chonburi 20150. If you'd like to order supplies in advance of your arrival, so that they're waiting for you when you check in, no problem, but please touch base and let's coordinate delivery time. For food delivery, foodpanda and Grab are your two best bets. Grab also delivers from pharmacies. For any delivery (if you don't speak Thai), you might want to provide Cherry's number, 085-920-9109, as she can speak to the delivery guy and facilitate.

**Swimming Pool:** Be VERY careful with small dogs—the pool is a potential drowning hazard. For anyone not a strong swimmer, please swim with one of our inflatable devices and with other people. If any member of your group wants a life vest, please let us know additional maid services during our stay).





# House Guide

Check-in, safety, house rules and resources

**Smoking:** Smoking is NOT allowed inside. Please use the ashtrays provided outside. Cigarette butts discarded on the ground will result in a thb 2000 fine.

**Pool Technician and Gardener:** The pool guy comes to clean the pool Tuesday, Thursday, and Saturday mornings (around 9 or 10am), so please be advised that an “unfamiliar” man will be on the property during this time.

**Maid Service:** The THB 2500 cleaning fee covers the initial cleaning only, and not any subsequent cleanings (we’re happy to facilitate additional maid services during your stay).

**Checking out is easy:** just turn off the air-con and lights, and leave the gate remote and keys on the table by the front door (just leave it unlocked, thanks)! We don’t charge for electric, but we will charge a 1000thb fee of if any air-conditioners are left on after checkout (our #2 pet peeve, after cigarette butts on the ground).

**Feedback:** If anything was/is less than perfect at the villa (i.e. the maid missed a spot), or you have any suggestions for improvement (adding some kitchen equipment, more towels somewhere, etc.), please let us know! We rely on guest feedback to improve the place, so any feedback is much appreciated, thanks.





# Explanatory Videos

Using house facilities and equipment

Here are some videos, explaining check-in, barbeque, fans, TVs, water/ice/coffee maker, and axe throwing. You don't necessarily need to watch the videos, EXCEPT (if you want to throw axes) the safety briefing for axe-throwing.

**Check-in, keys, remotes:** The front door will be open, and you'll find all the keys and remotes on the table immediately inside (In case the maid leaves the key in the lockbox, the combo is 0104). We live in a safe, gated community, so locking the door is optional (we never do).

<https://www.youtube.com/shorts/bUTArJols8E>



**Kitchen:** There are three sources of drinking water in the kitchen (fridge, and filtered water-spouts at both sinks), and various kitchen equipment for your convenience (coffee machine, kettle, toaster, etc). Coffee, tea, sweeteners, milk, bananas, and eggs are complimentary, so help yourself!

<https://youtube.com/shorts/RFjvIWakVH0>



**Stove:** If you have any trouble operating the stove or gas burner, these videos should help

**Stove:** <https://youtube.com/shorts/QyIBPXwGgIE?feature=share>

**Gas burner:** <https://youtu.be/uBPHwPQ5CIA>



**Living Room TV:** You can just use the "big" remote, but if you want to use the iView (i.e. channels from all over the world—what every bar here uses to show live sports), you'll have to change the input and use the small remote.

<https://youtu.be/oH2n9GPtx2o>





# Explanatory Videos

Using house facilities and equipment

**Fans:** To turn the fans on, you first must flip a switch, THEN the remotes will work.

<https://youtube.com/shorts/t3sT34YyyLo>



**Swimming pool light remote:**

<https://youtube.com/shorts/NRXkHVVHctXE?feature=share>



**Master bedroom TV:** Just use the small remote (Fire stick).

**Axe-throwing:** Obviously, make sure no people (or animals) are behind the board, or close to it (axes can bounce back). Make sure your hands are DRY when you throw. If axes collide on the board, check the handle! If not smooth, put away and let us know (you can badly slice your hand if you throw an axe with a damaged handle). <https://youtu.be/yoJldz0QXxM>



**Alarm:** If you hear beeping from this device from the front door, that just means some door or window is open. You can turn it off by pressing 4321#

<https://youtube.com/shorts/sbnPBhKYKbk>



**Koi House:** Feel free to feed the fish, maybe 1-2 scoops. Also, very tall people should watch their heads on the fan! <https://youtube.com/shorts/NeK0oJluKA4>



# Explanatory Videos

Using house facilities and equipment



**BBQ:** Our maintenance man (and Cherry's brother), K. Aey, will demonstrate the BBQ. You should also give the red button (by the gas canister) a push or two.

<https://youtube.com/shorts/rOqSEe2XBWI?feature=share>



**Games:** You have a choice of two ping pong nets, and note that one of the pool cues is a break cue (i.e. you don't use for normal shots).

<https://youtube.com/shorts/vhsTq0ji--s>

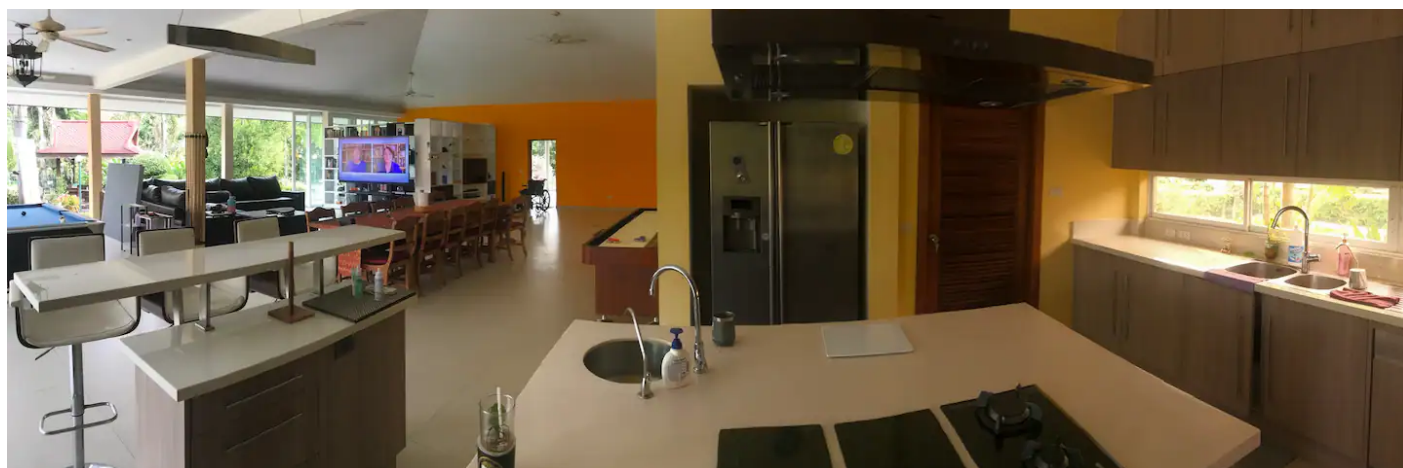





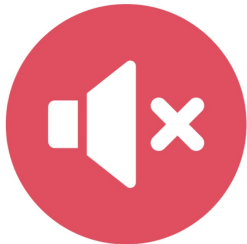
# Explanatory Videos

Using house facilities and equipment

**Food and drinks:** Help yourself to any coffee, tea, milk, eggs, bananas, and bread (complimentary, but not unlimited). We also have some beers and wines in the house. No sales pressure, but if you want to drink them, we charge 10% more than our cost, so 50thb for the beers, and 1200 for the wines. We offer that as a convenience to our guests, but if you'd prefer us to put all alcohol away, just let us know. (If you need more, we have extras in the fridge in the storage room).



**Noise:** Please keep it down after 8pm. If you're playing music, maybe close the glass door next to the pool (our neighbor is very close in that direction).



Please no **noise** after **8 pm**  
Unless you are being very quiet, please keep these glass doors closed after 8pm.  
Sound travels easily to the neighbors



**NO** axe throwing after dark!

**Emergency Contact:** Cherry/Tipyapa can help with anything requiring Thai language. In the event of an emergency, please call her at 08509209109.